



FLYING HORSE FARMHOUSE FLYING HORSE FARM

LEEDS, LS15 4NH

£1,150,000
FREEHOLD

*** AVAILABLE FOR IMMEDIATE OCCUPANCY *** Flying Horse Farmhouse is a charming, Grade II listed detached residence which offers over 3000 sqft of internal accommodation. This home offers exceptional standards of versatile, open plan living and benefits from a south-facing garden with views of the open countryside.

MONROE

SELLERS OF THE FINEST HOMES

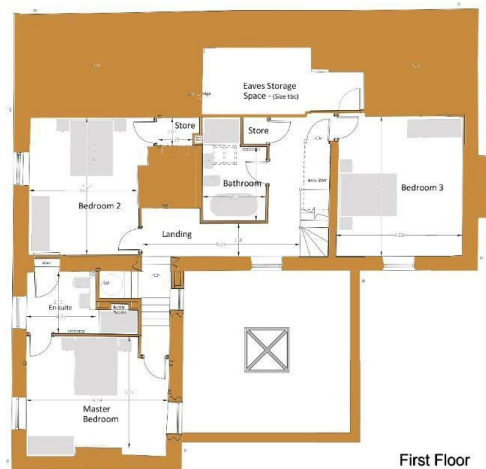


Cellar

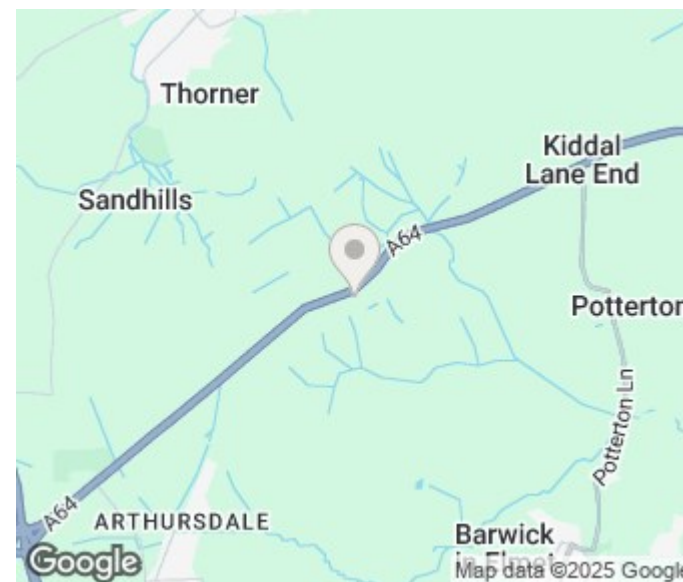
FARM HOUSE



Ground Floor



First Floor



| Energy Efficiency Rating | | |
|---|-------------------------|-----------|
| | Current | Potential |
| Very energy efficient - lower running costs | | |
| (92 plus) A | | |
| (81-91) B | | |
| (69-80) C | | |
| (55-68) D | 61 | 67 |
| (39-54) E | | |
| (21-38) F | | |
| (1-20) G | | |
| Not energy efficient - higher running costs | | |
| England & Wales | EU Directive 2002/91/EC | |

Agents Note: Whilst every care has been taken to prepare these particulars, they are for guidance purposes only. All measurements are approximate and are for general guidance purposes only and whilst every care has been taken to ensure their accuracy, they should not be relied upon and potential buyers/tenants are advised to recheck the measurements

Land & New Homes
1-3 The Avenue
Alwoodley
Leeds
West Yorkshire
LS17 7BD

0113 350 1444
landandnewhomes@monroestateagents.com
www.monroestateagents.com

MONROE

SELLERS OF THE FINEST HOMES